



BP2.EU

PRODUCT
CATALOGUE

LAMBDA[®] 2.0

Table of contents

1

Roof panels LAMBDA® 2.0

6	Technical data
22	Technological solutions
24	Innovative production line

2

Steel roof gutter systems

30	INGURI®
32	Colours INGURI®
33	Charge material

3

Flashing and accessories

36	Flashings
40	Universal ventilation flashing
42	Accessories
42	Roof communication system
43	Ventilation chimney and roof windows

4

Technical information and contact

46	Coating properties
47	Sound-absorbing coating
48	Colours
50	Contact

1



ROOF PANELS LAMBDA[®] 2.0

- 6 TECHNICAL DATA
- 22 TECHNOLOGICAL SOLUTIONS
- 24 INNOWACYJNA LINIA PRODUKCYJNA



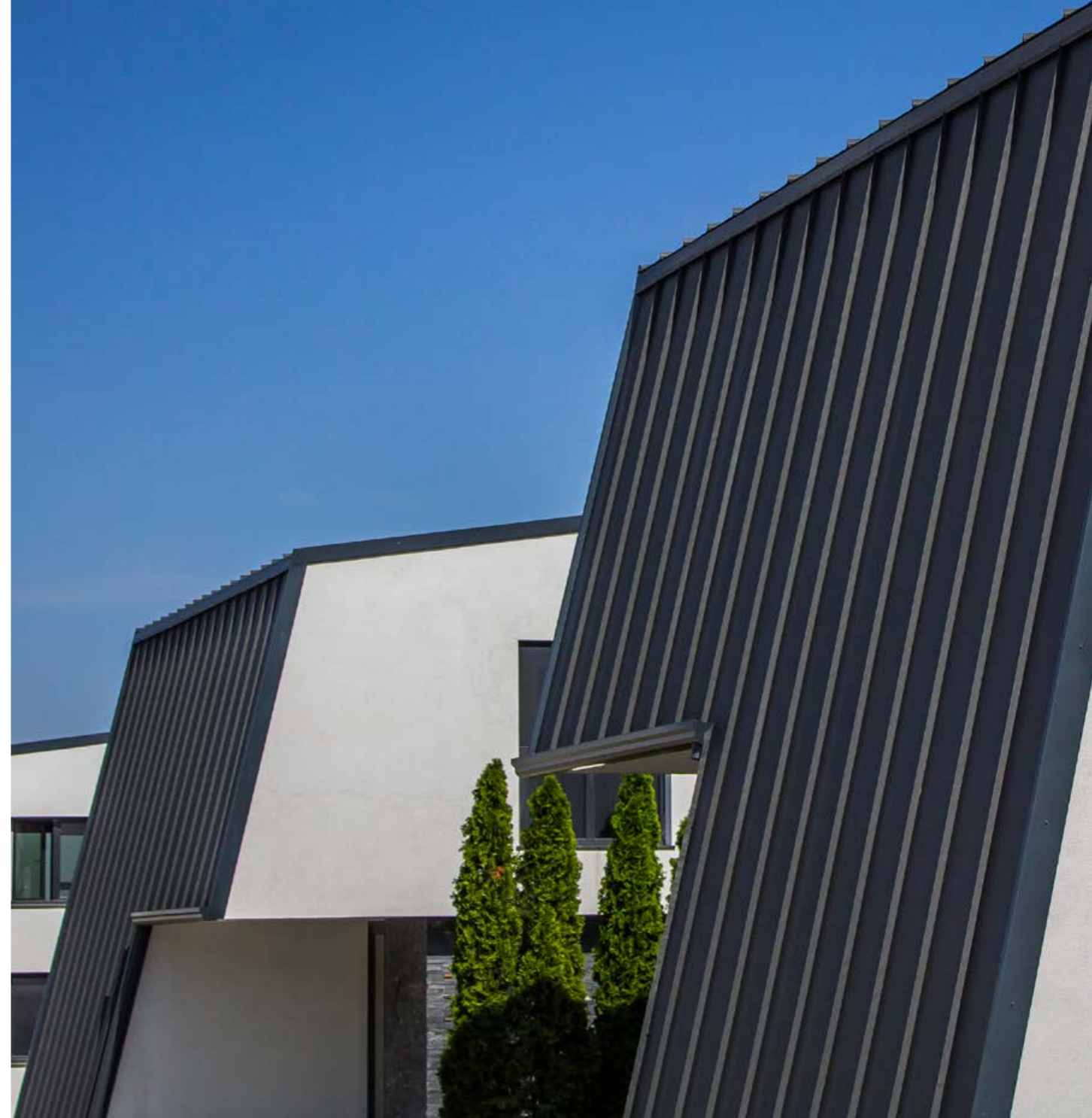
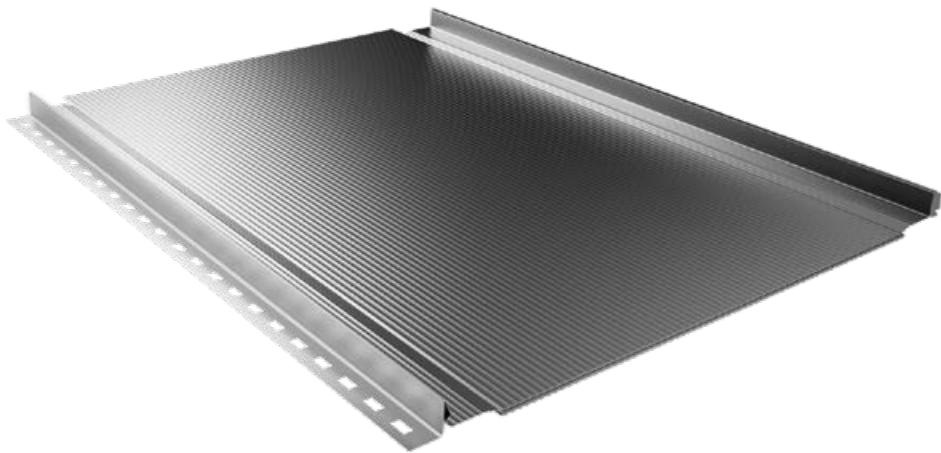
TECHNICAL DATA

LAMBDA® 2.0 is an improved version of light and versatile roof panels. The new offer provides more possibilities of configuration and the most recent technological solutions, and is perfectly refined with regard to aesthetics. Longitudinal micro-profiling along the whole sheet length minimizes the effect of waviness

on the flat section of the panel and the COVER-CAP finish ensures impeccable appearance of the roof. Roof panels are modern forms whose beauty is grounded in minimalism and functionality; this is why they are a good choice for both modern and traditional architecture.

LAMBDA® 2.0 is available in two panel widths (515 mm and 307 mm - effective widths) and four profile types which fact allows for perfect matching to the needs of a specific building.

LAMBDA® 2.0 – technical parameters [in mm]		
Glossary	L.2.0.515	L.2.0.307
Seam height	25	25
Effective width	515	307
Total width	~547	~339
Thickness of steel sheet	0,5 - 0,7	0,5 - 0,7
Sheet length	max. 10 000	

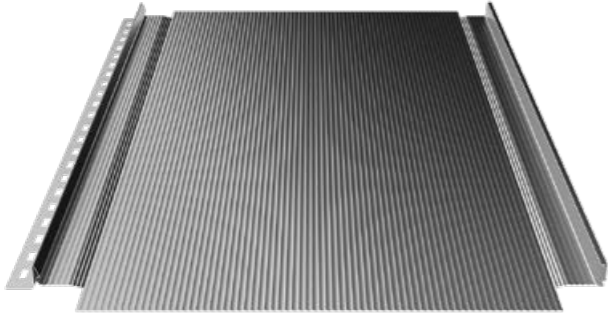


Roof panels LAMBDA® 2.0

LAMBDA® 2.0

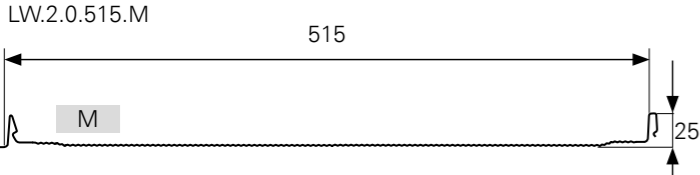


Roof panels LAMBDA® 2.0

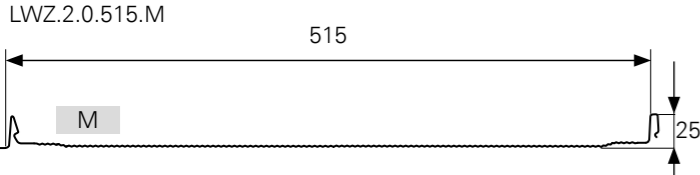
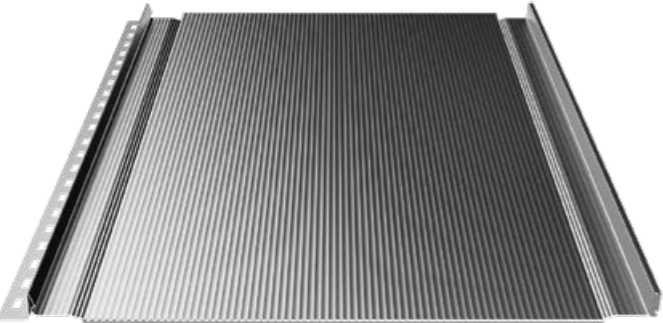


MICRO-RIB [M]

Longitudinal micro-profiling along the whole sheet length minimizes the effect of waviness on the flat section of the panel.



Roof panel LAMBDA® 2.0 with longitudinal micro-profile MICRO-RIB and cut-out for bending.



Roof panel LAMBDA® 2.0 with longitudinal micro-profile MICRO-RIB and BEND-LOCK bending.

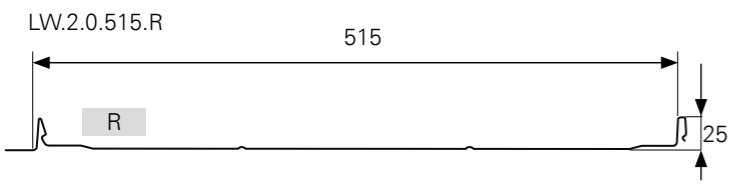


Roof panels LAMBDA® 2.0

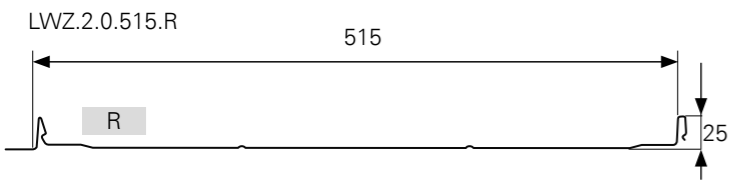


[R] TYPE PROFILE

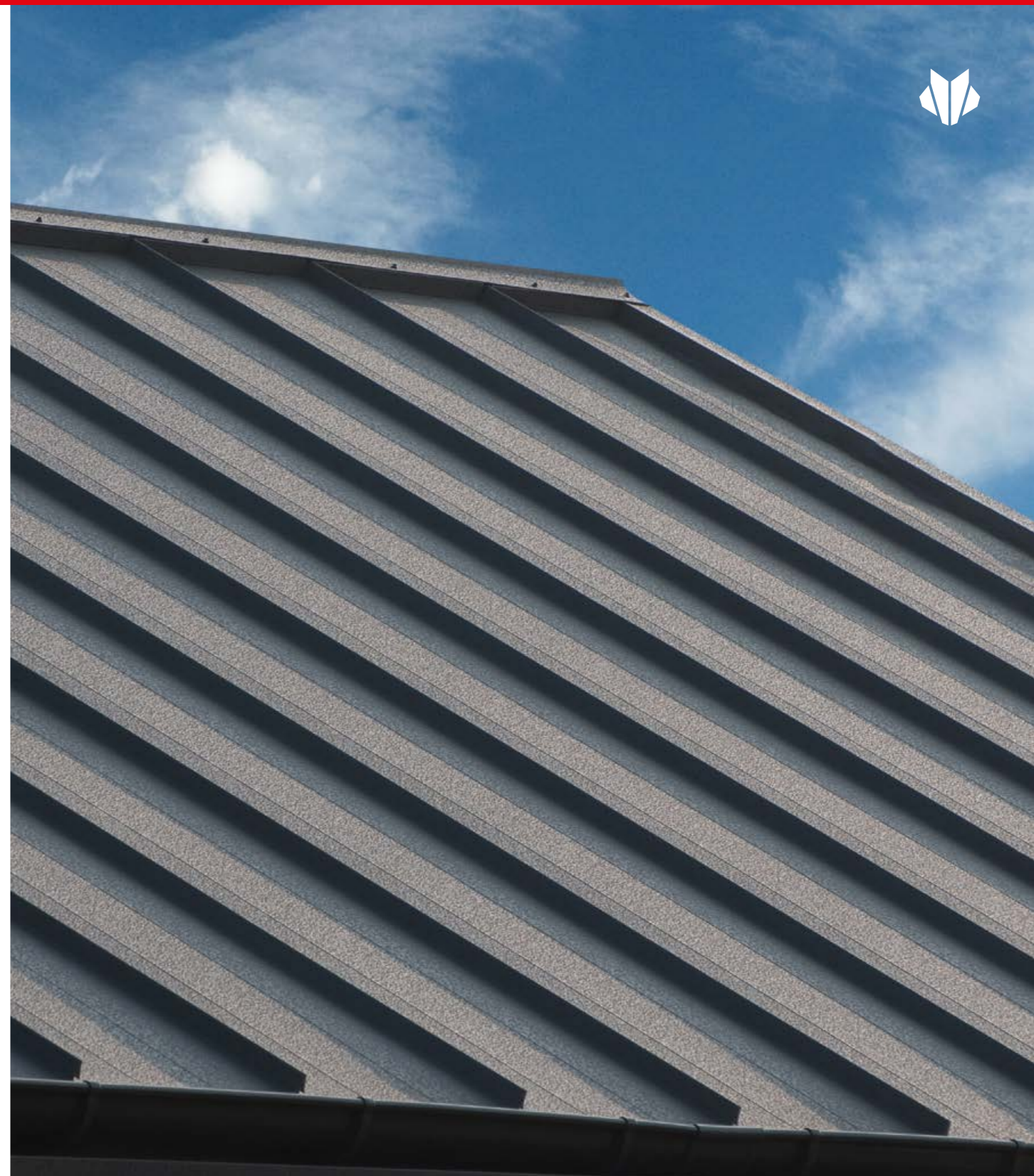
Finish of the panel surface with longitudinal profile with symmetrical grooves.



Roof panel LAMBDA® 2.0 with double semi-circular profile and cut-out for bending.



Roof panel LAMBDA® 2.0 with double semi-circular profile and BEND-LOCK bending.

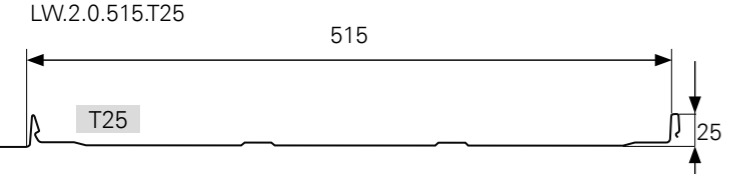


Roof panels LAMBDA® 2.0

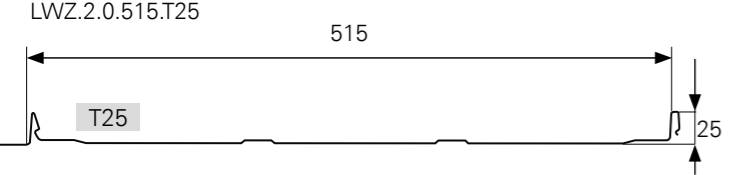


[T25] TYPE PROFILE

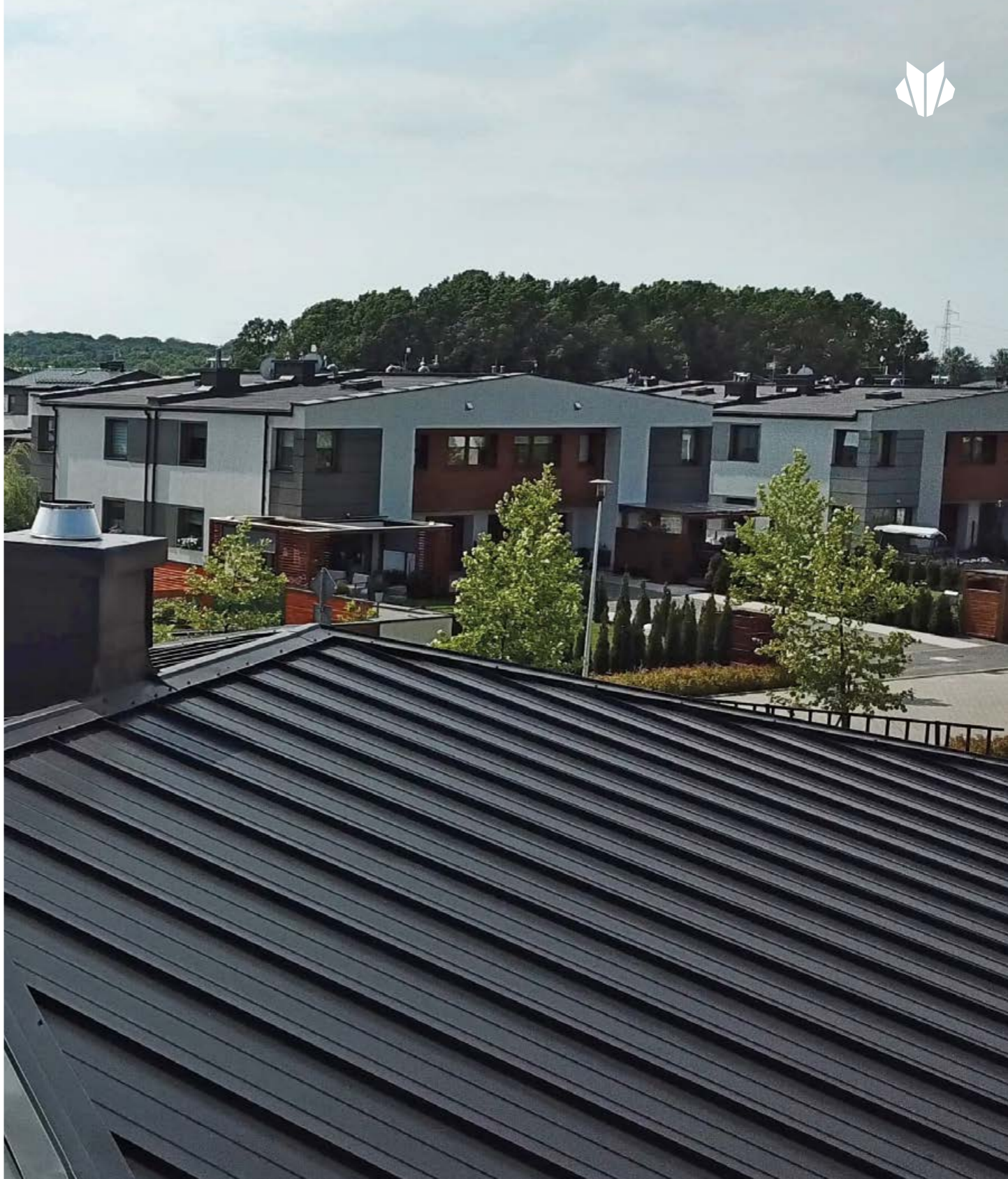
Finish of the panel surface with longitudinal profile to a shape of wide trapezoid.



Roof panel LAMBDA® 2.0 with double trapezoid profile and cut-out for bending.



Roof panel LAMBDA® 2.0 with double trapezoid profile and BEND-LOCK bending.



Roof panels LAMBDA® 2.0

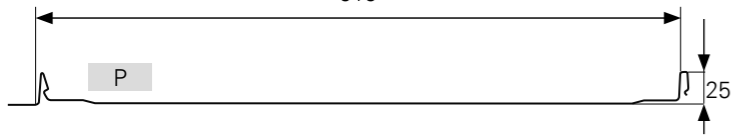


SURFACE WITHOUT RIBS [P]

A classical panel surface without any ribs.

LW.2.0.515.P

515

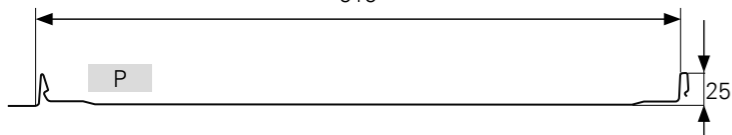


Roof panel LAMBDA® 2.0 with flat surface and cut-out for bending.



LWZ.2.0.515.P

515



Roof panel LAMBDA® 2.0 with flat surface and BEND-LOCK bending.



Note!
Due to the design of roof panels, the cladding sheets may become "wavy". This is normal for this type of products.



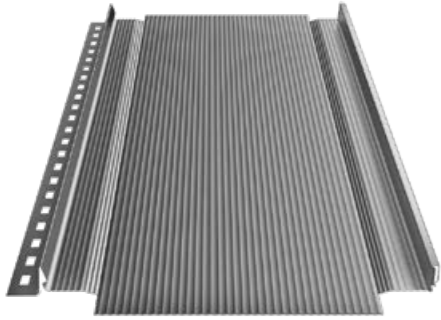
Roof panels LAMBDA® 2.0



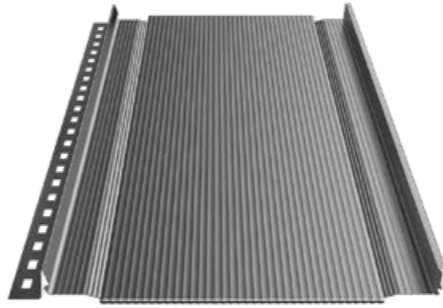
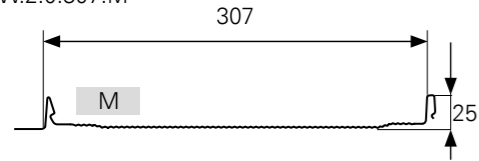
LAMBDA® 2.0



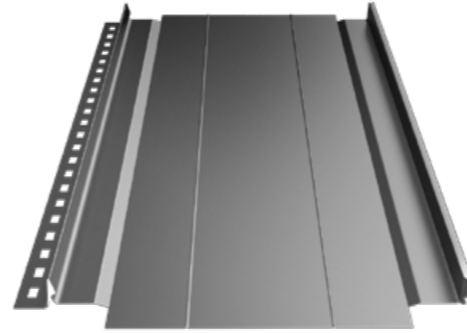
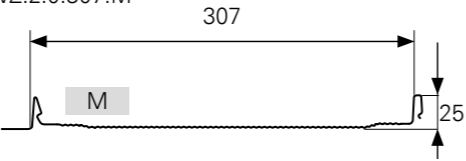
Roof panels LAMBDA® 2.0



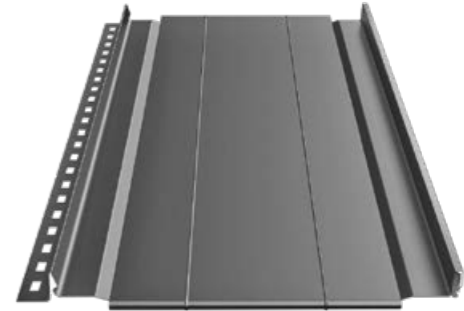
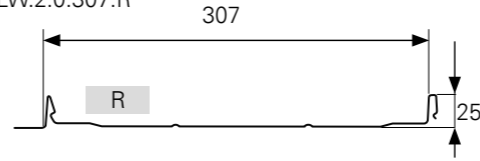
LW.2.0.307.M



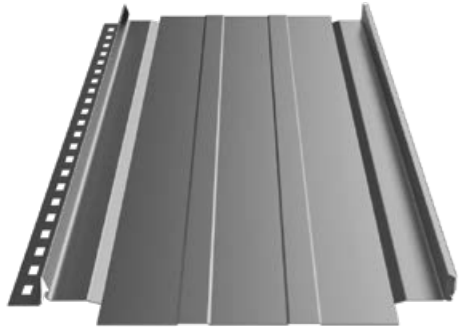
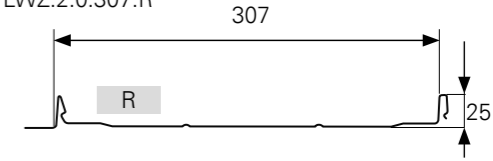
LWZ.2.0.307.M



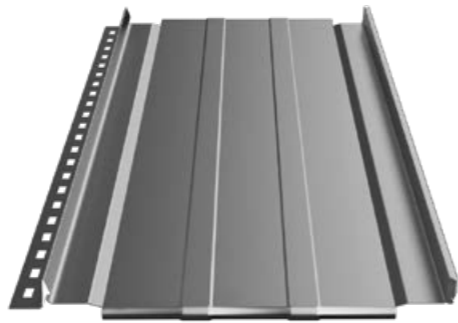
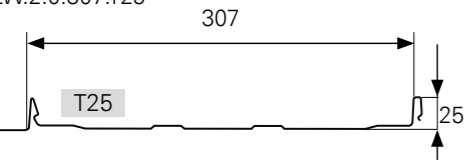
LW.2.0.307.R



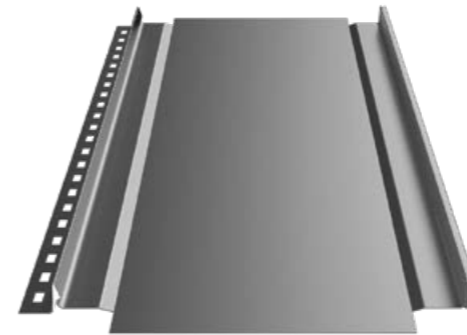
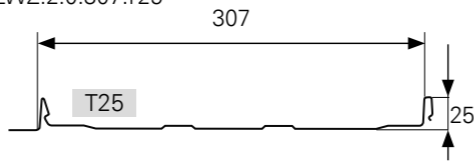
LWZ.2.0.307.R



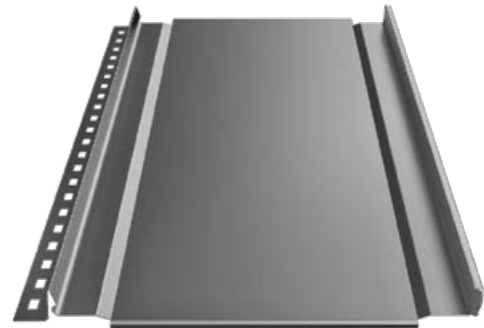
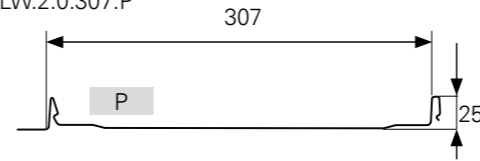
LW.2.0.307.T25



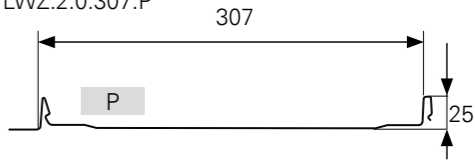
LWZ.2.0.307.T25



LW.2.0.307.P



LWZ.2.0.307.P



TECHNOLOGICAL SOLUTIONS

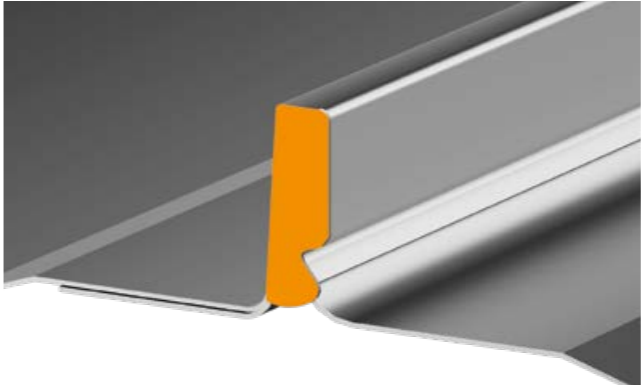
BEND-LOCK

Special bending of the panel at the eaves section of the roof masks and protects the cut edge and eliminates the necessity to install bolts.



COVER-CAP

COVER-CAP, i.e. two-sided plugs of the very hem of the panel, is a solution that additionally improves functionality of the roofing. This solution improves the visual effect and aesthetics of the coating.

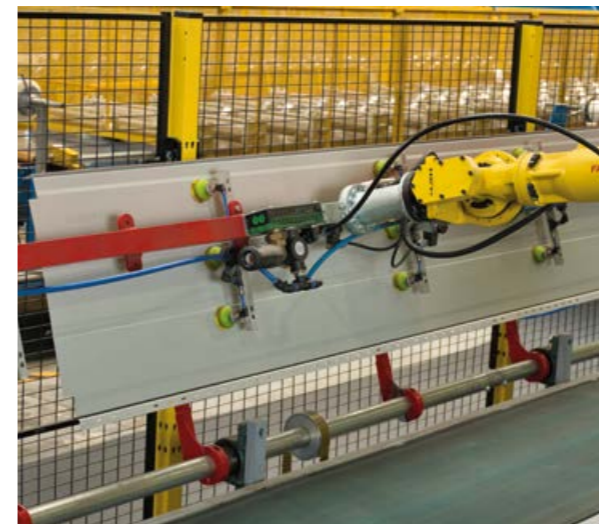


The **COVER-CAP** plugs are bent to the roofing which fact covers visible joints of the sheets and makes the roof to present uniform, harmonious surface, even from a close distance.

INNOVATIVE PRODUCTION LINE

This high-end and fully automated production line is equipped with two cooperating industrial robots allowing for the implementation of an innovative protection and packing process that enables their transport in a vertical arrangement. This solution reduces the risk of product damage during transportation and panel operation at a construction site. Due to its perfect precision and task repetition, robotisation of manufacturing processes prevents material deformation and ensures the highest quality and precision of product workmanship.

- Unique production line equipped with two cooperating industrial robots,
- increase in the production line efficiency,
- load securing measures for transportation,
- packing in a vertical arrangement,
- very high repetition of product parameters.



Roof panels LAMBDA® 2.0



LAMBDA® 2.0



2



STEEL ROOF GUTTER SYSTEMS

30 INGURI®
32 COLOURS INGURI®
33 CHARGE MATERIAL

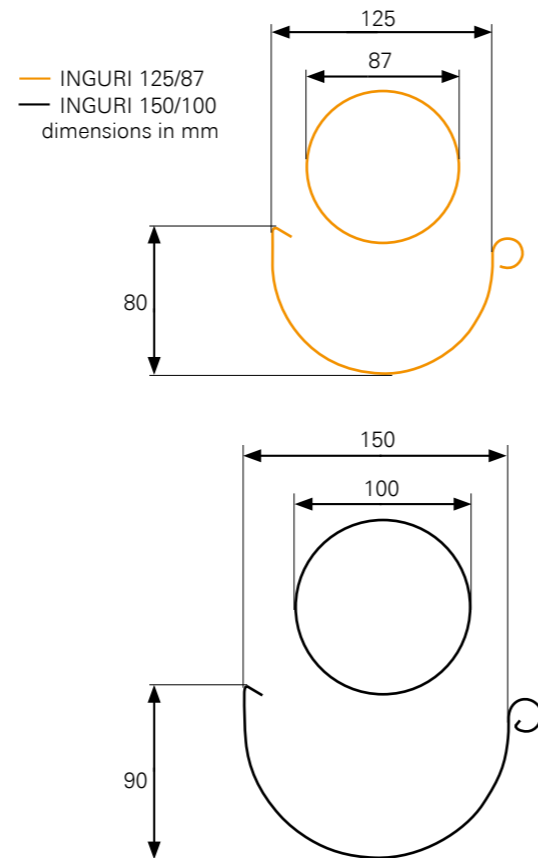
Steel roof gutter systems



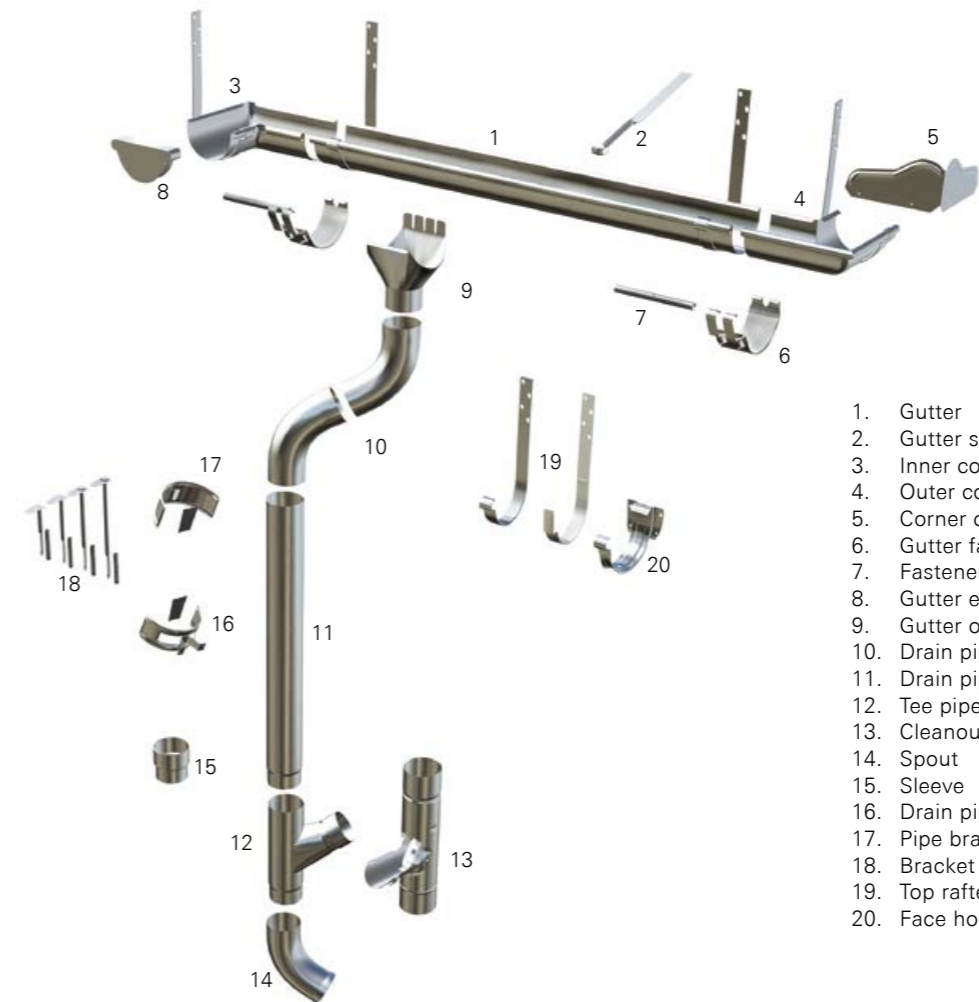
125/87
150/100

Application of a right gutter system allows for effective water discharge from roofing, which is vital for its durability and functionality. It also protects the building's façade from damages caused by moisture. INGURI® are complete gutter systems made from two-side coated steel of highest quality. All the systems' elements are designed in a way that

assures easy alignment and quick installation. The shape and depth of gutters assure effective water discharge, even during intense and long rainfalls.



DESCRIPTION OF SYSTEM COMPONENTS



1. Gutter
2. Gutter support
3. Inner corner
4. Outer corner
5. Corner cover
6. Gutter fasteners
7. Fastener stabilizer
8. Gutter end cap
9. Gutter outlet
10. Drain pipe elbow
11. Drain pipe
12. Tee pipe
13. Cleanout
14. Spout
15. Sleeve
16. Drain pipe clamp half
17. Pipe bracket for anchors
18. Bracket anchors
19. Top rafter hooks
20. Face hook


Steel roof gutter systems

COLOURS


INGURI®

INGURI® pipes are manufactured from sheet with hot galvanized feed, which after chemical cleansing and undergoing passivation is coated with anti-corrosion coats and a decorative, organic coat. The sheet is 0,6 mm thick, with the organic layer being material of high resistance to atmospheric conditions and mechanical damage, as well as UV radiation that causes color loss.


The INGURI® Systems are also manufactured from Aluzinc 185 sheets with additional double-sided polymeric Easyfilm® polymeric coating.




Specific warranty terms and conditions are stated in the warranty card.




Printing technology does not have the capability of reproducing coating colours precisely. The colours shown here are intended for the orientation purposes only and may vary from those of the coatings themselves.




CHERRY




GRAPHITE




BRICK




CHOCOLATE BROWN



DARK BROWN



WHITE*



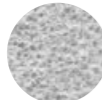
BLACK

Code	Thickness of paint coating	Thickness of galvanized coating	Corrosion (resistance)	UV radiation (resistance)	Warranty period (years)
INGURI [PUR/PUR]	50 µm	275 g/m ²	C4	RUV3	30

Aluzinc INGURI [AZ 185]

It is a steel sheet double-side coated with a zinc-aluminium alloy in a process similar to hot dip galvanizing. That way, it meets the most stringent requirements regarding the resistance of steel sheets against atmospheric corrosion and corrosion in humid environments.

It comes with an additional, Easyfilm® protective polymer coating, which also protects the steel edges in coils and improves the aesthetics of the surface.



AZ

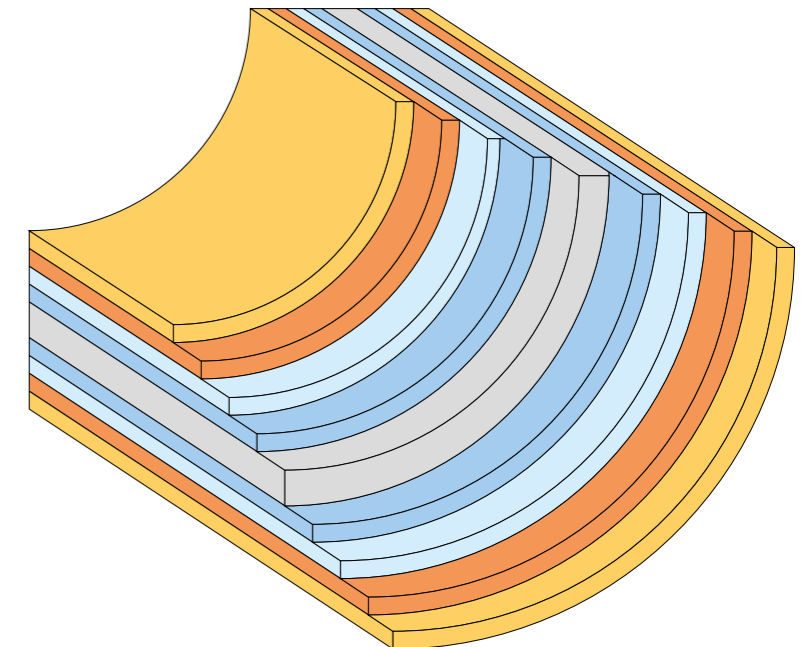
Code	Thickness of coating	Corrosion (resistance)	UV radiation (resistance)	Warranty period (years)
Aluzinc [AZ 185]	185 g/m ²	C3	n/a.	15

*WHITE colour available for the system INGURI® 150/100.

CHARGE MATERIAL

The material for the manufacturing of INGURI® gutters is supplied by recognized companies, which deliver the highest-quality steel in the form of Aluzinc sheet metal - galvanized and coated - constituting the input material for gutter production. A careful selection of the input material producer has a crucial impact on the quality and durability of a product. It is manifested in its resistance to corrosion and discolourations. Therefore, the INGURI® gutter systems are subject to a long warranty.

Coated sheet section



Legend

- Organic coating
- Priming coat
- Anti-corrosion coat
- Metallic coating
- Steel core



FLASHING AND ACCESSORIES

- 36 FLASHINGS
- 40 UNIVERSAL VENTILATION FLASHING
- 42 ACCESSORIES
- 42 ROOF COMMUNICATION SYSTEM
- 43 VENTILATION CHIMNEY AND ROOF WINDOWS

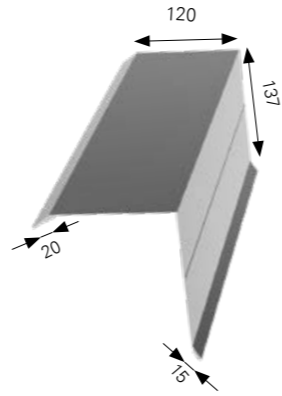
FLASHINGS

Ridge tiles and flashings are an indispensable part of every correct roofing. They prevent water and wind intrusion and improve the appearance of the roof. The flashings are made from sheets available in the same range of coatings and colours as the metal roofing tiles, trapezoidal sheets and roof panels we produce.

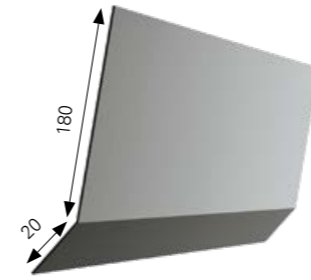


Standard flashings of the following dimensions: 2m long and 0.5mm thick. Non-standard flashings up to 8mm long and 2mm thick.*

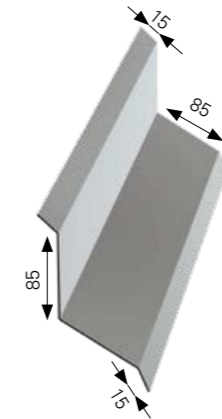
* Does not apply to the bottoms and snow guards.



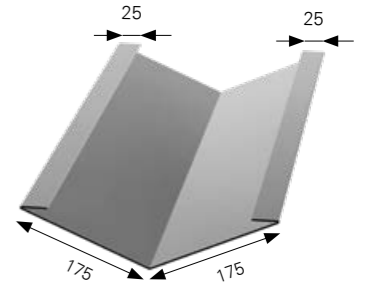
WIND BRACE I



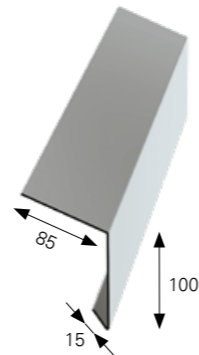
WIND BRACE EXTENSION



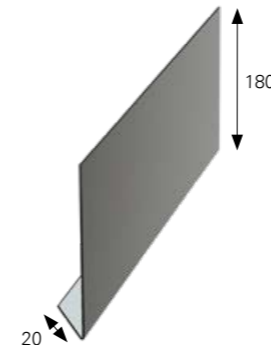
NEAR-WALL WORKING I



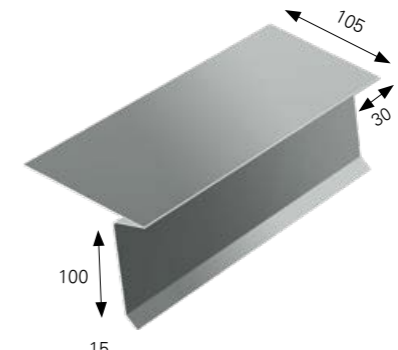
GUTTER BASKET



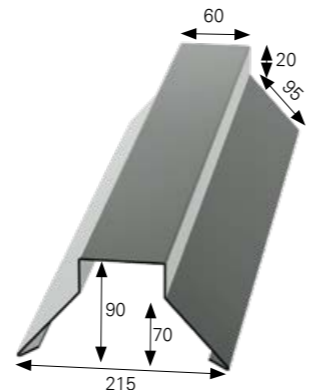
OVER-GUTTER STRIP



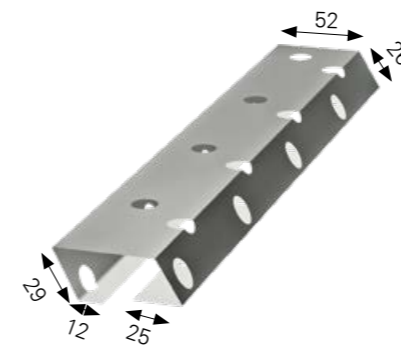
UNDER-GUTTER STRIP



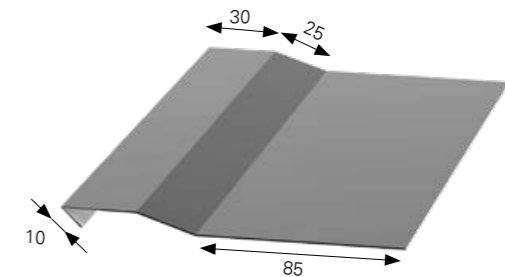
STARTING GUTTER FLASHING LAMBDA 2.0°



TRAPEZOID RIDGE TILE



UNIVERSAL VENTILATION FLASHING



PANEL JOINT LAMBDA 2.0°

Roof panels LAMBDA[®] 2.0



LAMBDA[®] 2.0





UNIVERSAL VENTILATION FLASHING



Provision of correct roof ventilation is key for comprehensive functionality of the roofing. This precludes accumulation of condensation in the bottom part of the sheet that adversely affects both the rafter framing and the roofing itself. Universal ventilation flashing is a product that due to its

construction can be used as a sub-hip tile finish for roof panels LAMBDA® 2.0. This allows not only for ventilating the space below the roofing but also perfectly secures the roof against penetration of small rodents and birds.



Flashing and accessories

Accessories

Accessories are available to complete the BLACHPROFIL 2® offer. They enabling a roof or façade to be professionally assembled and protected. We stock products from renowned manufacturers on a permanent basis. Our offer includes:

- tapes (including the expansion tapes),
- seals,
- fastening systems,
- roofwork silicone,
- ventilation chimney,
- leak stoppers,
- sealing tape,
- roof membranes
- dedicated bolts for roof panels LAMBDA 2.0,
- TORX screws.

Roof communication system

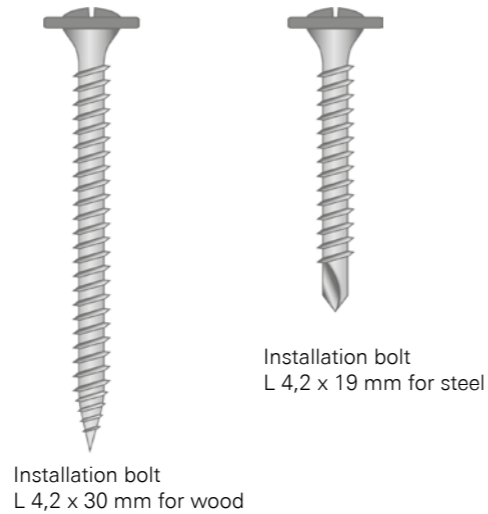
The Blachprofil 2® roof communication system is comprised of roof elements which, once installed, facilitate safe access to chimneys, ventilators and antennas. The access is available all year round, even when snow has accumulated on the roof. The BLACHPROFIL 2® roof communication system also eliminates the risk of mechanical damage (indenting) to the roofing.

surface eliminates the effects of snow and icing, as well as preventing people moving about on the roof from slipping.

The BLACHPROFIL 2® roof communication system is offered in a rich palette of colours, allowing colour synchronisation of the roofing, the chimney-sweeping benches and other structural elements.

All the elements listed are made of high-grade, galvanised and powder-coated steel. They guarantee a long service life, without the need to repaint or repair corrosion-related defects. They are constructed to bear heavy wind loads. The specially designed ribbed

- Our offer includes:
- chimneysweep toe holds
 - chimneysweep foot-plates
 - snow guards



Ventilation chimneys and roof windows

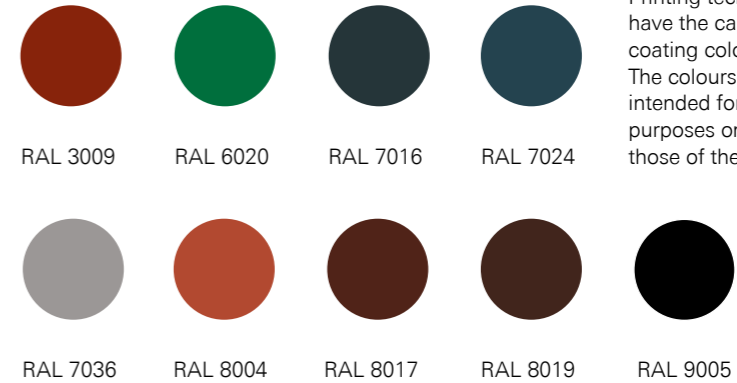
Proper roof ventilation is crucial for the draining of excess steam from the building, thus preventing condensation in rooms.

Our offer includes ventilation chimneys and a complete set of accessories, which facilitate an air-tight installation on a roof slope, as well as additional elements: antenna penetrations and ventilators.

Each model of a ventilation chimney has been specifically adapted for installation on a particular type of roofing:

- chimneys of metal sheet modular roofing tiles,
- chimneys of metal sheet compact and traditional roofing tiles,
- chimneys dedicated for flat cladding, box profile sheets and LAMBDA® 2.0 roof panels.

The chimneys in our catalogue are also available in the version with additional insulation that prevents condensation of steam inside a ventilation duct. They are



Printing technology does not have the capability of reproducing coating colours precisely. The colours shown here are intended for the orientation purposes only and may vary from those of the coatings themselves.

particularly recommended for the ventilating of rooms with high humidity concentrations, such as kitchens, bathrooms or garages.

Installing BLACHPROFIL 2® roof windows allows for loft space to be developed, providing its complete illumination. There are BLACHPROFIL 2® windows to satisfy our clients' requirements and expectations, regardless of the angle of incline or the distance of the rafters. We also offer

special windows for rooms with higher moisture levels and very low angles of incline, as well as electronically-controlled windows. The possibility of rotating the window simplifies the cleaning process, while the appropriate protection of the wood, carried out during the production process, guarantees a long service life, without the need for additional maintenance.



4



TECHNICAL INFORMATION AND CONTACT

- 46 COATING PROPERTIES**
- 47 SOUND-ABSORBING COATING**
- 48 COLOURS**
- 50 CONTACT**

COATING PROPERTIES



Specific warranty terms and conditions are stated in the warranty card. In case of modular metal sheet roofing tiles IZI®Roof, IZI®Look and ZET®Roof and ZET®Look, the guarantee becomes valid after registering on the internet site www.warranty.bp2.eu.

Poniższe zestawienie ma charakter orientacyjny.

Kod	Grubość powłoki lakierniczej	Odporność na korozję	Odporność na promieniowanie UV	Okres gwarancji (lata)
POLIESTER Standard [RAL]	25 µm	C3	RUV2	10
MAT 35 Standard [TK]	35 µm	C3	RUV3	15 [ZET®/IZI® - 30*]
Aluzinc [AZ 185]	185 g/m ²	C3	nie dotyczy	25
MAT 35 ZM [TKep]	35 µm	C3	RUV4	30
ICE COVER® ZM [ICep]	35 µm	C3	RUV4	35
HERCULIT® [HC]	35 µm	C4	RUV4	40 [ZET®/IZI® - 55*]

*Applies to modular roof tiles IZI® and ZET®.

Sheets with MAT 35 ZM and ICE COVER® ZM coating do not require painting to protect the cut edges.

SOUNDCONTROL® SOUND-ABSORBING COATING

SOUNDCONTROL®
Acoustic isolation

SOUNDCONTROL® sound-absorbing coating

The use of the SOUNDCONTROL® sound-absorbing coating on steel roof and facade coverings results in a significant improving of the level of acoustic insulating power. Consequently, the noise generated by atmospheric precipitation falling on the covering, and sound propagation inside the building, are reduced. Roof coverings with the SOUNDCONTROL® coating are applied in all types of facilities that require high acoustic standards, resulting from their size or purpose, such as: production halls, sports arena, agricultural facilities, and residential buildings. The SOUNDCONTROL® coating can also function as an anti-

condensation membrane, since it features very high properties, concerning moisture absorption.

Sound-absorbing coating is applied on flat sheet strip before profiling. It provides perfect adhering across the whole roofing.

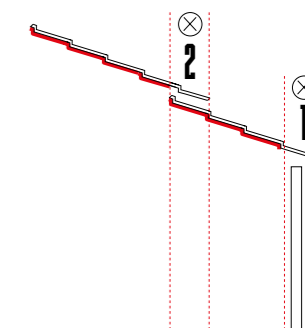


WARNING! Binding is permanent. SOUNDCONTROL® material cannot be removed and applied again. When using SOUNDCONTROL® on industrial buildings, it is recommended to wash it with a fungicidal

Assembly guidelines:

During the assembly, the SOUNDCONTROL® coating must be removed from places which do not allow for the outflow of moist air. Most of all, this applies to:

1. Fragments of roofing directly above the wall and outside the building's limits,
2. Places where sheets overlap – in case where the roofing consists of several sheets joined by length.



product at least once a year. During the roofing's assembly the phenomenon of capillary action. Hence, the SOUNDCONTROL® should be manually removed around the eaves and ridges (minimum clearance of 10 cm). The sheets with the

applied anticondensation coating should stick closely to the structure's props and frames. Therefore, regardless of the profile, they should be mounted to the props in each lower wave.

COLOURS

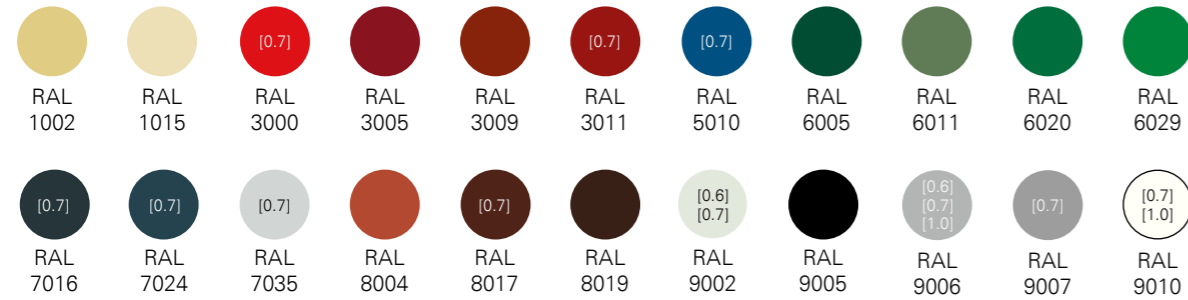


Non standard colours and coatings, other than the ones in the presented range, are also available upon request.



Printing technology does not have the capability of reproducing coating colours precisely. The colours shown here are intended for the orientation purposes only and may vary from those of the coatings themselves.

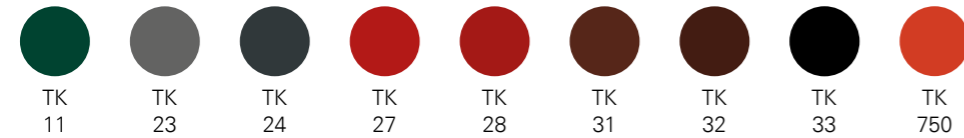
POLIESTER Standard [RAL]



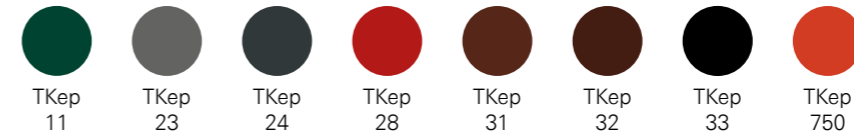
Metallic coating



MAT 35 Standard [TK]



MAT 35 ZM [TKep]



HERCULIT® [HC]

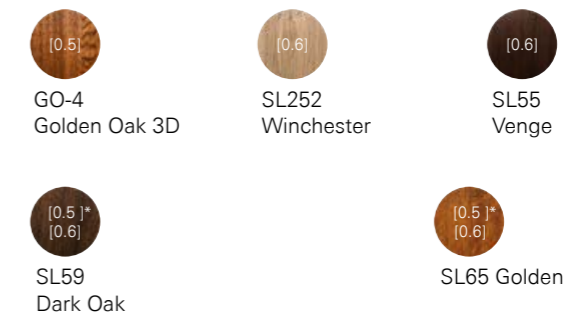
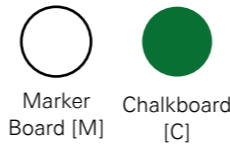


ICE COVER® ZM [ICep]



Coated woodgrain steel sheets MULTILAYER [SP35/MULTI] [available thicknesses]

Metal sheet boards



*Also available in a double-coated version: SH59/SH59

*Also available in a double-coated version: SH65/SH65

	Standard sheet thickness is 0.5 mm
[0.6]	Material also available with the thickness of 0.6 mm
[0.7]	Material also available with the thickness of 0.7 mm
[0.8]	Material also available with the thickness of 0.8 mm
[1.0]	Material also available with the thickness of 1.0 mm

Contact

BLACHPROFIL 2® SP. Z O.O.

Manufacturing and Logistics Centre

32-566 Alwernia
Grojec, ul. Grojecka 39

tel. +48 12 628 03 00
fax +48 12 628 03 04
e-mail: grojec@bp2.pl

Production plant (construction profiles)

41-303 Dąbrowa Górnicza
ul. Budowlanych 10

tel. +48 32 213 33 10
fax +48 32 213 33 60
e-mail: dabrowa@bp2.pl

www.bp2.eu

S.C. IMPRO® S.R.L.

Manufacturing and Logistics Centre

Str. Leonardo da Vinci nr 15
Jucu Hergheleie, TETAROM III Jud. Cluj

Production plant (sandwich panels)

DDN 59 km 8+550 m stânga,
Parcul Industrial INCONTRO
307221 Chişoda, Jud. Timiș.

www.impro.ro



www.facebook.com/blachprofil2



www.instagram.com/blachprofil2



www.linkedin.com/company/blachprofil-2



bit.do/blachprofil

Notes

All numerical values and physical and chemical properties of the products included in the catalogue are provided for orientation and visual purposes only. BLACHPROFIL 2® reserves the right to introduce improvements and changes to the technical parameters of the products. The catalogue may include mistakes or errors that occurred during editing and printing.

This catalogue is an invitation to submit an offer within the meaning of art. 14 paragraph 2 of the Convention on Contracts for the International Sale of Goods.
Copyright © BLACHPROFIL 2® 2020. All rights reserved.

