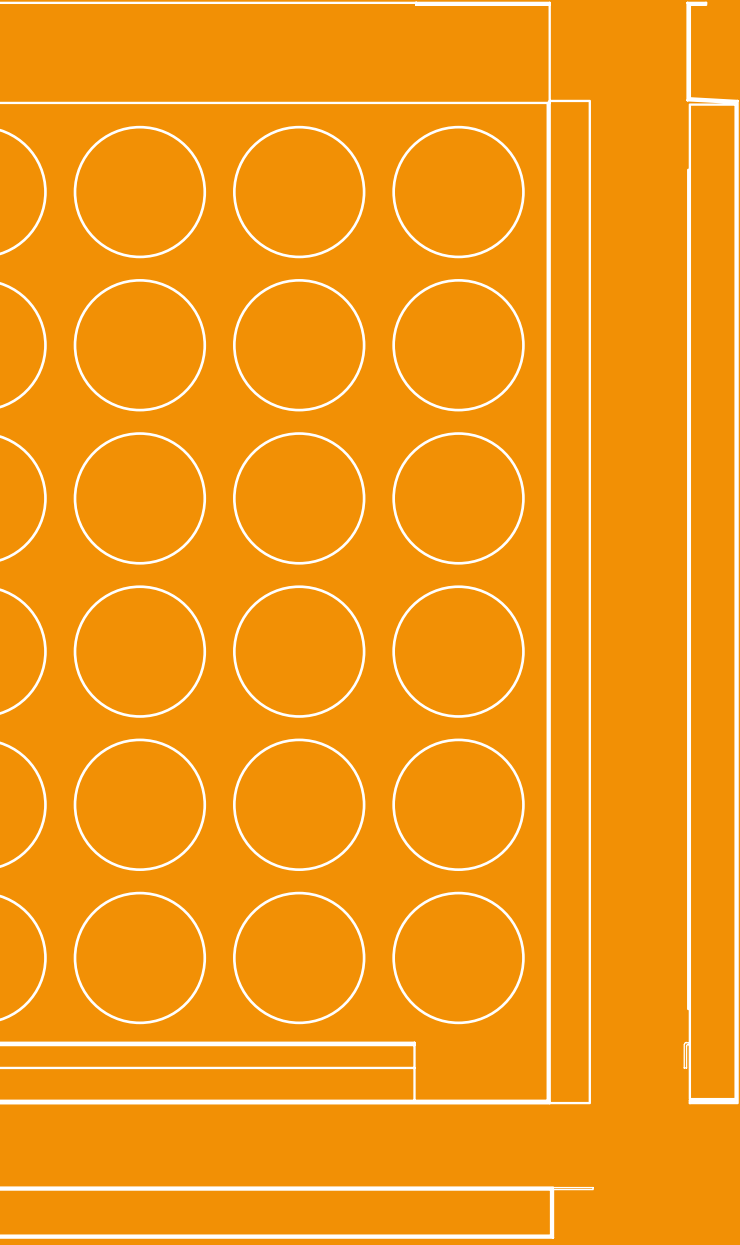


DATA SHEET



SKRIN[®]

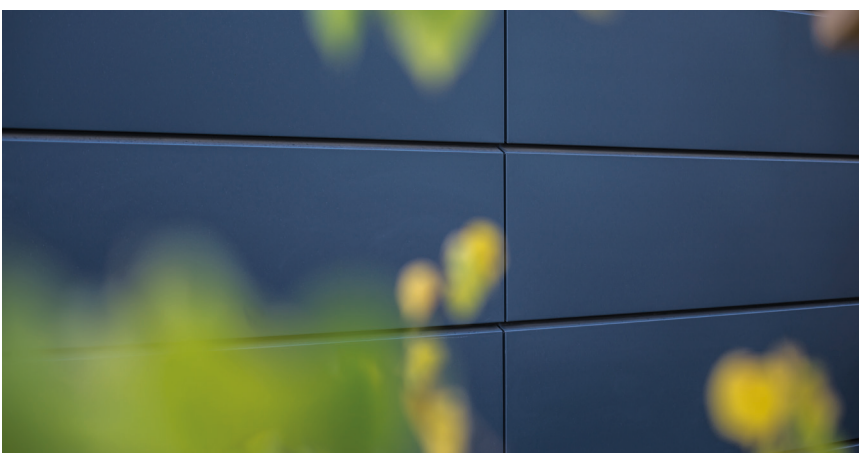
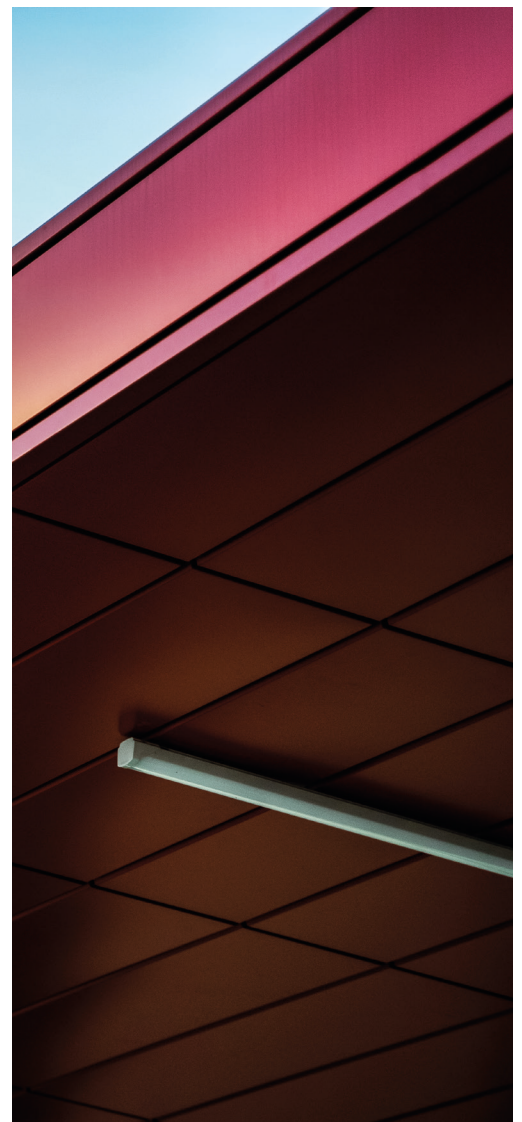
FACADE PANELS

INTRODUCTION

Facade panels are products which are widely used in the construction industry due to their versatility. They work well as a facade cladding for both new and renovated buildings. Not only can they be used to clad the smallest buildings, such as garages and sheds or single-family houses but also large facades of office, commercial, public and multi-family buildings.

BP2's offer includes a wide range of products enabling the implementation of investment projects. Our panels can be mounted both horizontally and vertically. According to the customer's expectations, various coatings are used to protect the panels taking into account the corrosion class of steel. Any colour indicated by the customer is not a problem for us. We have developed system solutions, such as corners, trapezoidal elements, etc., which are required by architects in the building design. We can make custom elements tailored to the customer's needs.

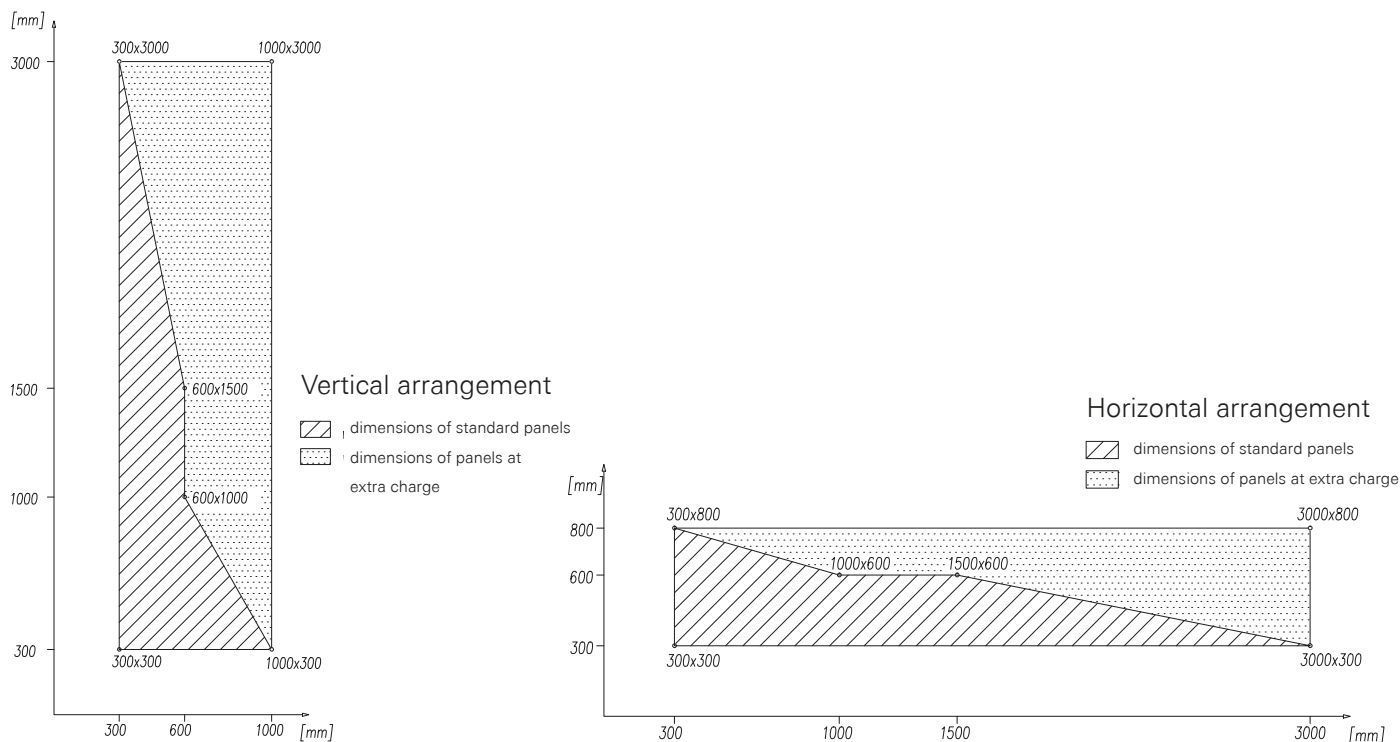
We offer assistance in each investment process: from the design stage to implementation, acceptance of the building and during its operation.



TECHNICAL SPECIFICATIONS

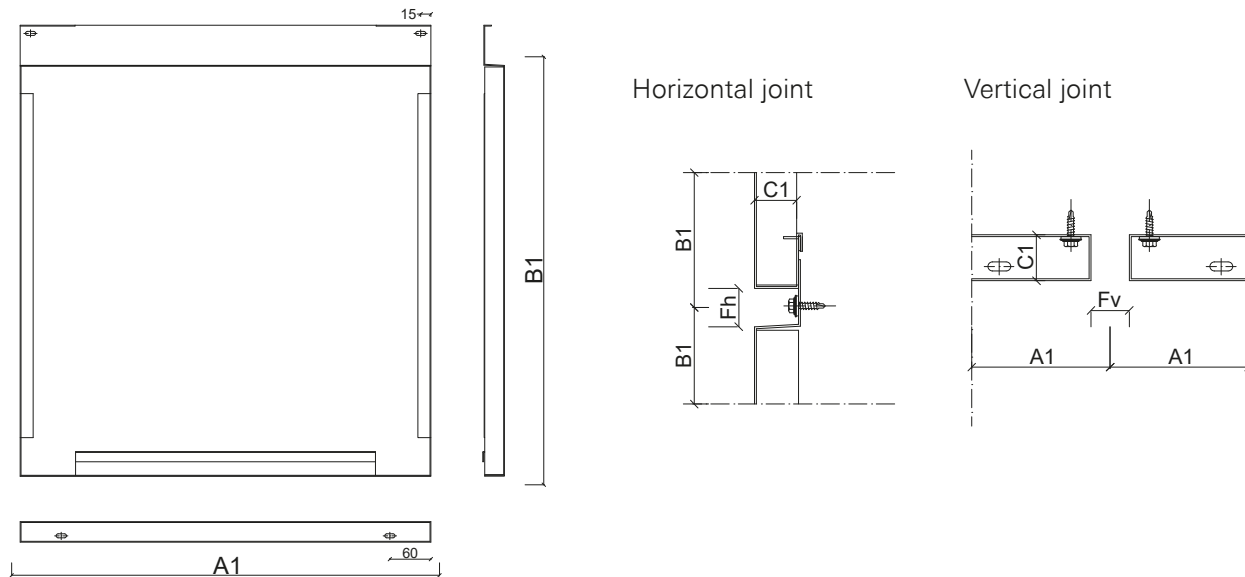
Technical parameters	
Width A1 min/max - horizontal installation	300/3000 mm
Height B1 min/max - horizontal installation	300/800 mm
Width A1 min/max - vertical installation	300/3000 mm
Height B1 min/max - vertical installation	300/1000 mm
Thickness C1	30 mm
Joint width - FH horizontal/FV vertical	25/25 mm
Mounting holes	oval 6x15 mm, round Ø 9 mm
Ventilation holes	oval 6x15 mm
Thickness of sheet meta	1,25 mm
Coatings and colours	acc. to individual customer's requirements
Fastener	visible/concealed
Installation method	horizontal/vertical

SKRIN® facade panel maximum and minimum dimensions

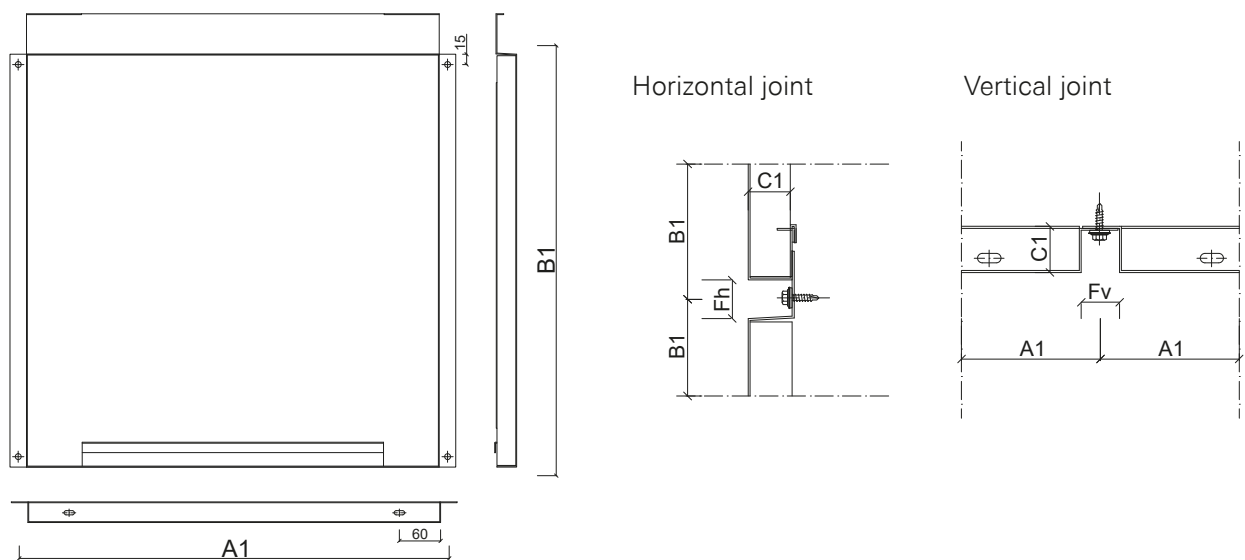


SKRIN® FACADE PANELS

Basic panel for horizontal installation



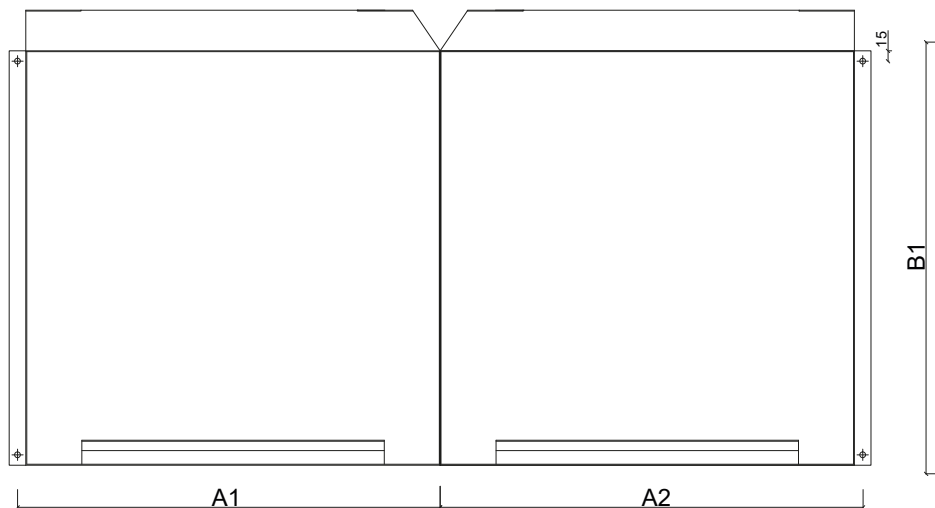
Basic panel for vertical installation



SKRIN® FACADE PANELS

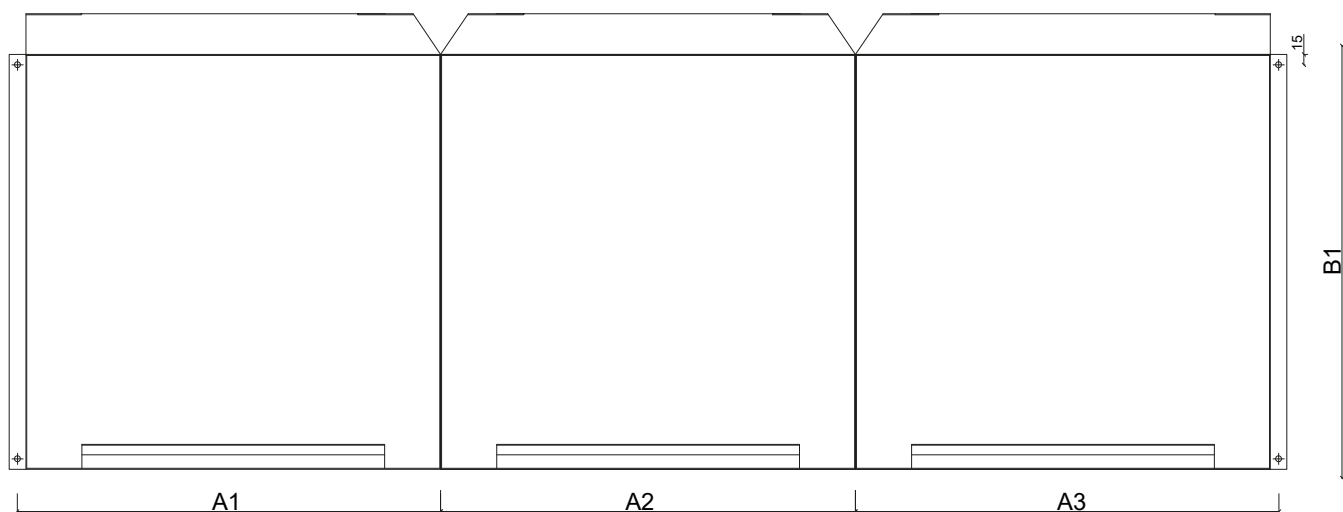
L-shaped corner panel for horizontal installation

$A1_{max} + A2_{max} = 3000$ mm, $A1_{min} = 300$ mm, $A2_{min} = 300$ mm
 $B1_{min} = 300$ mm, $B1_{max} = 800$ mm



U-shaped corner panel for horizontal installation

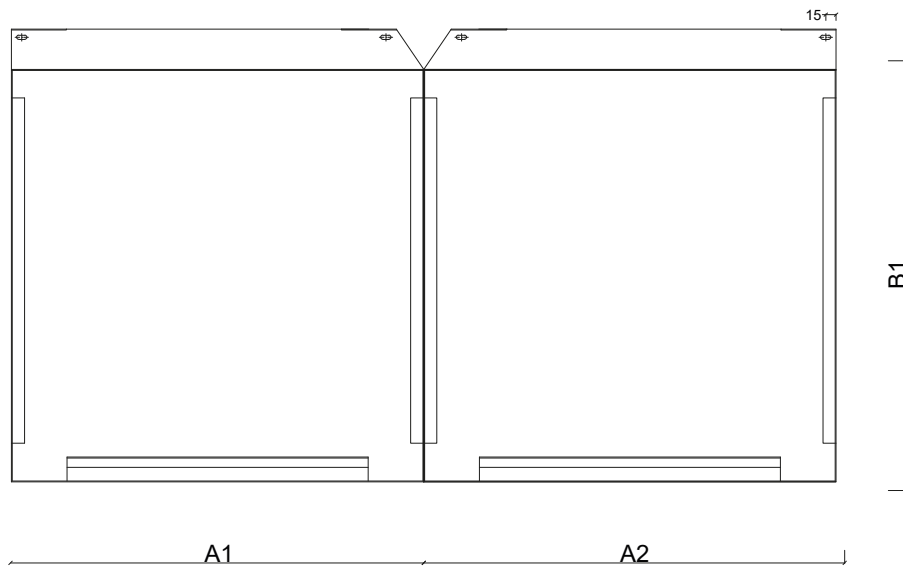
$A1_{max} + A2_{max} + A3_{max} = 3000$ mm, $A1_{min} = 300$ mm, $A2_{min} = 300$ mm
 $B1_{min} = 300$ mm, $B1_{max} = 800$ mm



SKRIN® FACADE PANELS

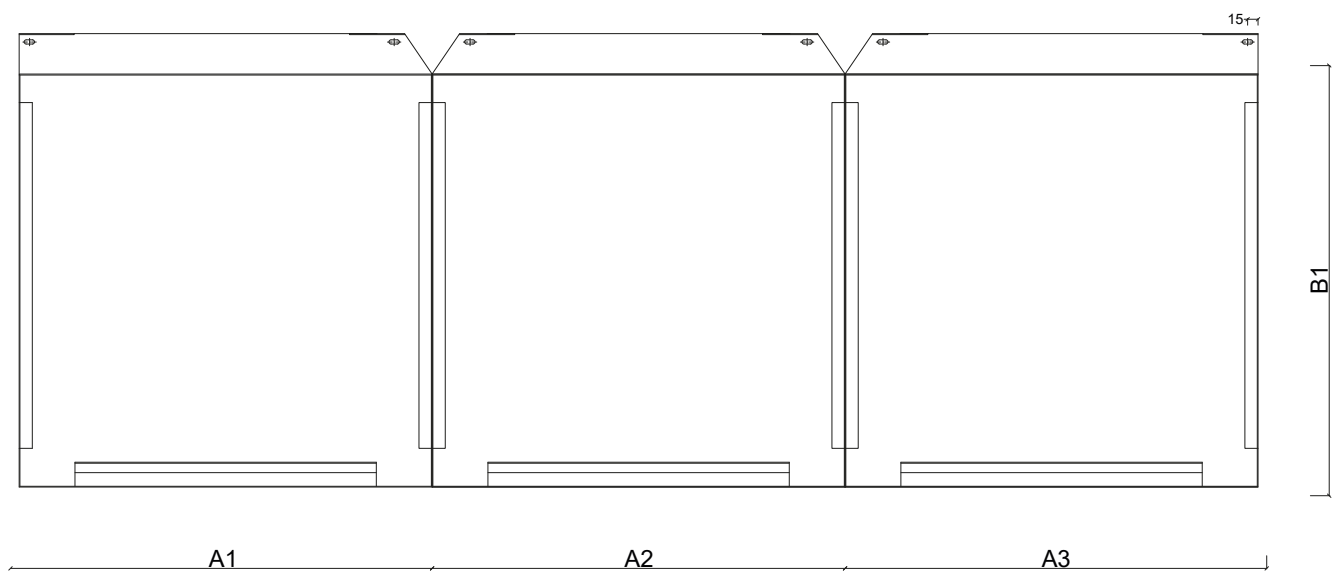
L-shaped corner panel for Vertical installation

$A1_{max} + A2_{max} = 1000 \text{ mm}$, $A1_{min} = 300 \text{ mm}$, $A2_{min} = 300 \text{ mm}$
 $B1_{min} = 300 \text{ mm}$, $B1_{max} = 3000 \text{ mm}$



U-shaped corner panel for vertical installation

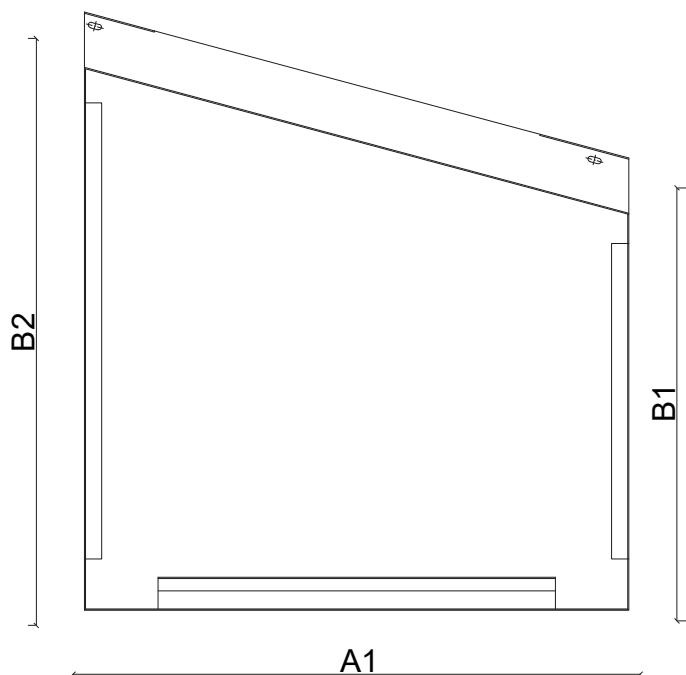
$A1_{max} + A2_{max} + A3_{max} = 1000 \text{ mm}$, $A1_{min} = 300 \text{ mm}$, $A2_{min} = 300 \text{ mm}$, $A3_{min} = 300 \text{ mm}$,
 $B1_{min} = 300 \text{ mm}$, $B1_{max} = 3000 \text{ mm}$



SKRIN® FACADE PANELS

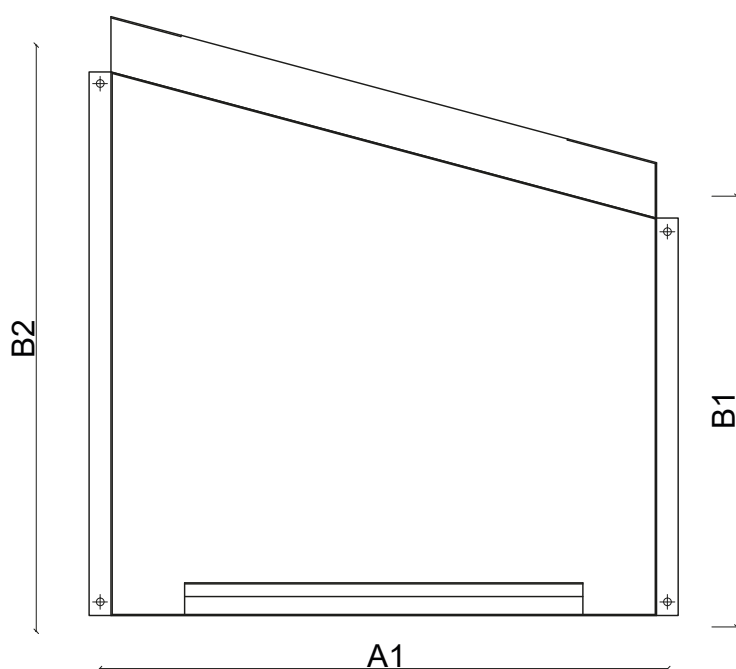
Trapezoidal panel for horizontal installation

$A1_{max} = 3000 \text{ mm}$, $A1_{min} = 300 \text{ mm}$,
 $B1_{min}$, $B2_{min} = 300 \text{ mm}$, $B1_{max}$, $B2_{max} = 800 \text{ mm}$



Trapezoidal panel for vertical installation

$A1_{min} = 300 \text{ mm}$, $A1_{max} = 1000 \text{ mm}$, $B1_{min}$, $B2_{min} = 300 \text{ mm}$,
 $B1_{max}$, $B2_{max} = 3000 \text{ mm}$

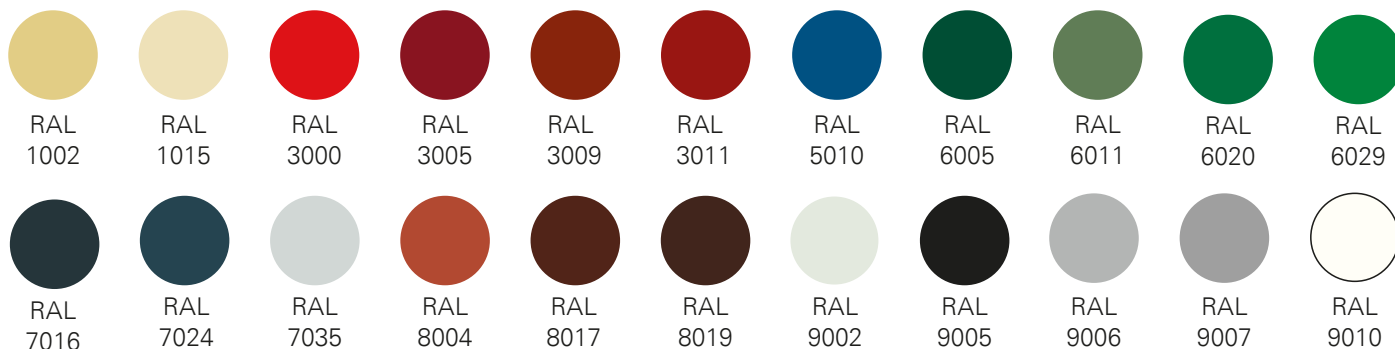


SKRIN® FACADE PANELS

COLOUR



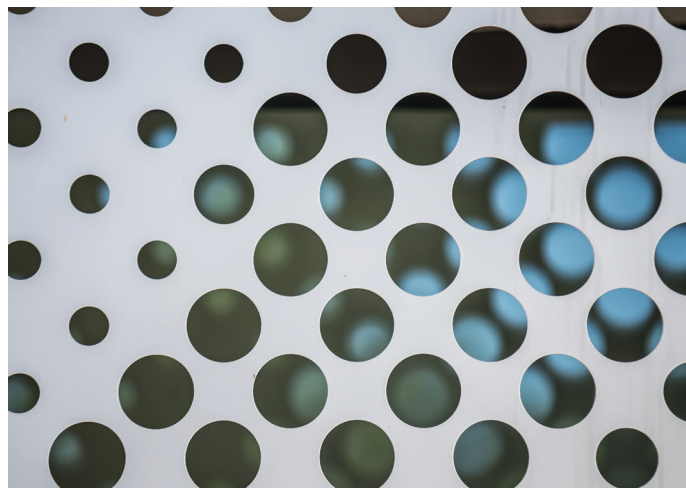
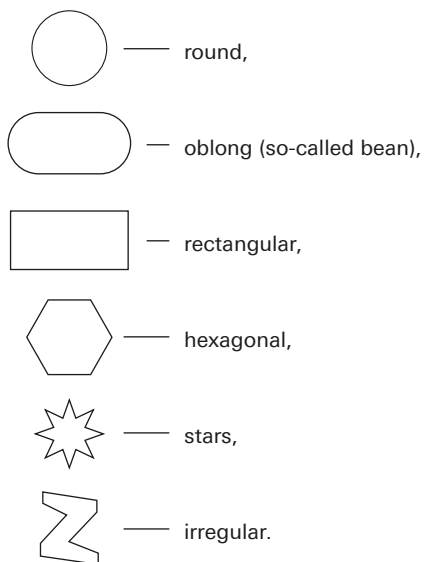
The colours shown in the picture are for illustrative purposes only and may differ from the actual colours.



In addition, custom colours and coatings are available for individual orders, outside of the palette shown.

PERFORATIONS

We make perforations in a wide range of sizes and shapes:



Perforations

We offer the possibility of perforating SKRIN® panels in a wide range of sizes and shapes. Details are agreed individually with the sales department.

